

# Compatibility View

## INTERNET EXPLORER 9, 10 & 11

There are some occurrences where clicking on the **Trans ID** for your pay stub will not bring up the pay stub. This occurs because of a compatibility issue with Internet Explorer 9, 10 & 11.

This is easily fixed using the instructions listed below:

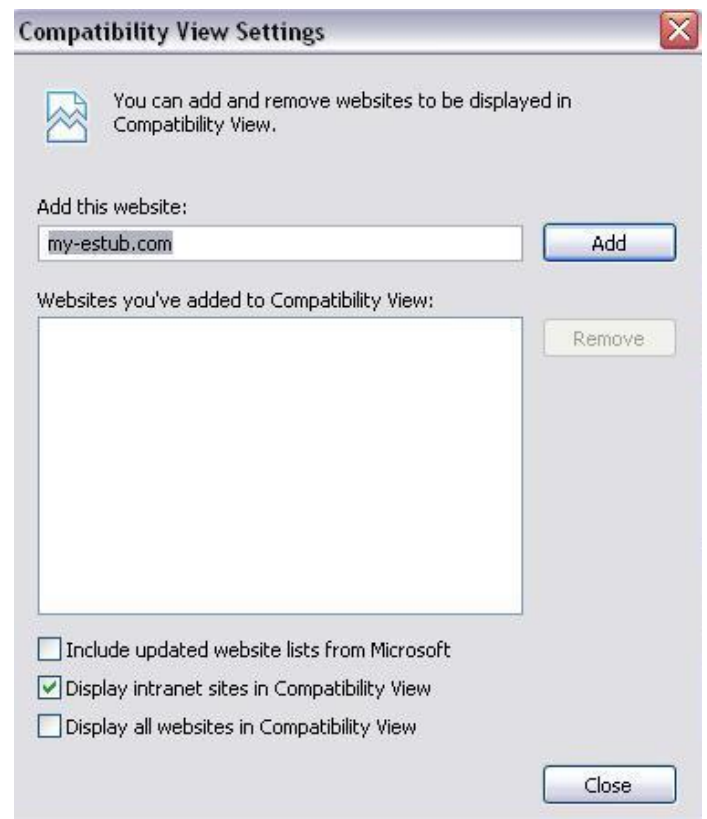
### STEP 1

At the top of the screen you will see: **File, Edit, View, Favorites, Tools** and **Help**.



### STEP 2

Click **Tools** and then choose **Compatibility View Settings**. The **Compatibility View Settings** box will automatically appear in the upper left hand corner of your screen.



### STEP 3

The option for my-estub.com will already be highlighted. Click on the **Add** button to add my-estub.com to the box below.

### STEP 4

Click the **Close** button at the bottom. This will automatically refresh your screen.

### STEP 5

When your screen refreshes, click on the **Employee Portal** and login again.